



Handleiding installatie weConnect 2012

Strawinskylaan 3051, 1077 ZX Amsterdam, support@nexocial.com

Inhoudsopgave

Inhoudsopgave.....	1
Step 01 : Installatieomgeving.....	2
Step 02 : weConnect installeren	3
Step 03 : SharePoint instellen.....	6
Zoekfunctie importeren.....	8
Zoekfunctie configureren.....	10
Zoeken naar twee inhoudsbronnen.....	13

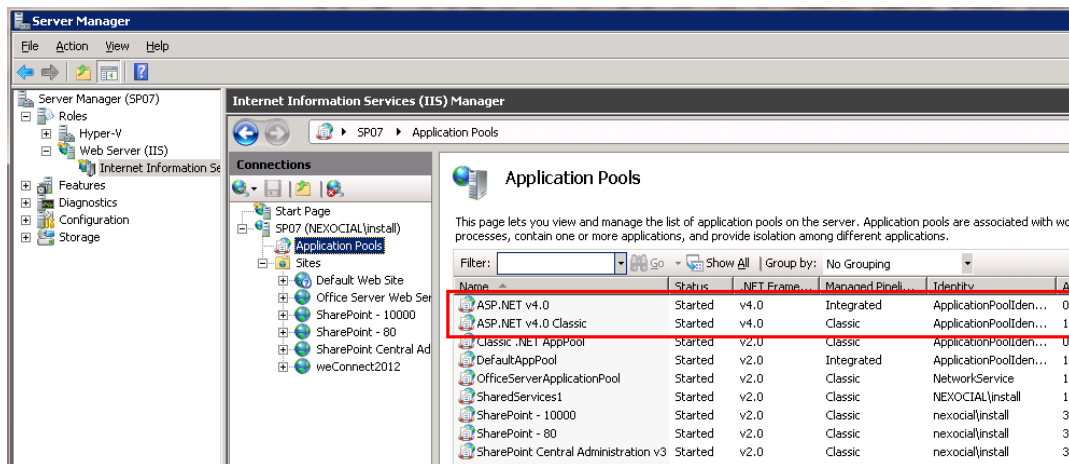
Step 01 : Installatieomgeving

Besturingssysteem: Windows server 2008 / Windows server 2008 R2

Database: SQL 2005 / SQL 2008

SharePoint server: SharePoint server 2007 / SharePoint server 2010

weConnect ondersteunt alleen Microsoft.NET framework 4.0. Als de versie op de computer niet 4.0, update dan alstublieft naar deze versie. Bekijk welke versie u hebt zoals hieronder is aangegeven:



The screenshot shows the Server Manager console for an Internet Information Services (IIS) Manager. The 'Application Pools' section is selected, displaying a list of application pools. A red box highlights the first two entries, which are both v4.0.

Name	Status	.NET Framework	Managed Pipeline	Identity	App
ASP.NET v4.0	Started	v4.0	Integrated	ApplicationPoolIden...	0
ASP.NET v4.0 Classic	Started	v4.0	Classic	ApplicationPoolIden...	1
Classic .NET AppPool	Started	v2.0	Classic	ApplicationPoolIden...	0
DefaultAppPool	Started	v2.0	Integrated	ApplicationPoolIden...	1
OfficeServerApplicationPool	Started	v2.0	Classic	NetworkService	1
SharedServices1	Started	v2.0	Classic	NEXOCIAL\install	1
SharePoint - 10000	Started	v2.0	Classic	nexocial\install	3
SharePoint - 80	Started	v2.0	Classic	nexocial\install	3
SharePoint - Central Administration v3	Started	v2.0	Classic	nexocial\install	3

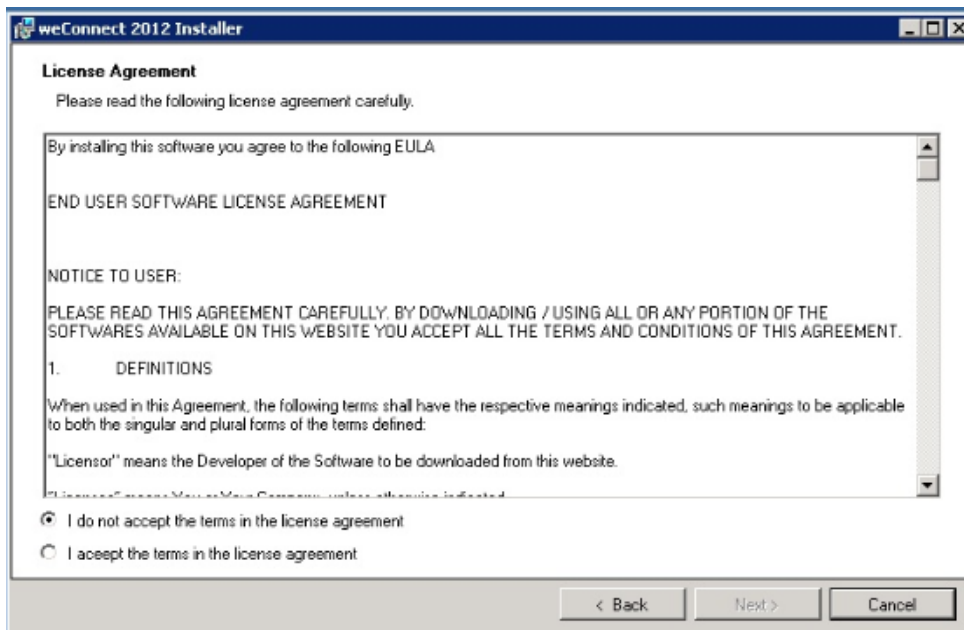
Step 02 : weConnect installeren

- Open "Installation file" als volgt en klik "Next".

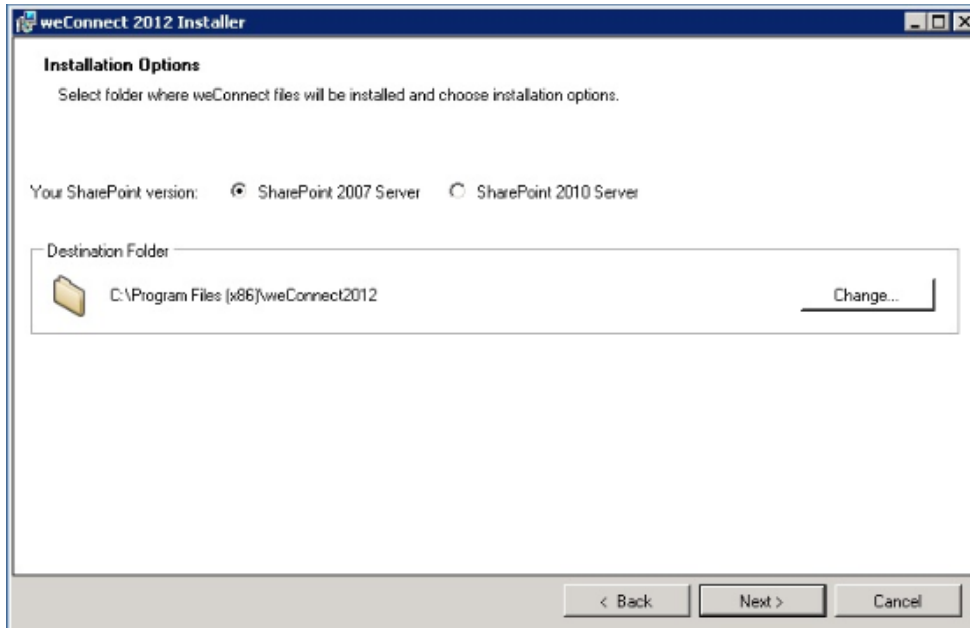


- Licentieovereenkomst

Kies "I accept the terms in the license agreement" en klik "Next".



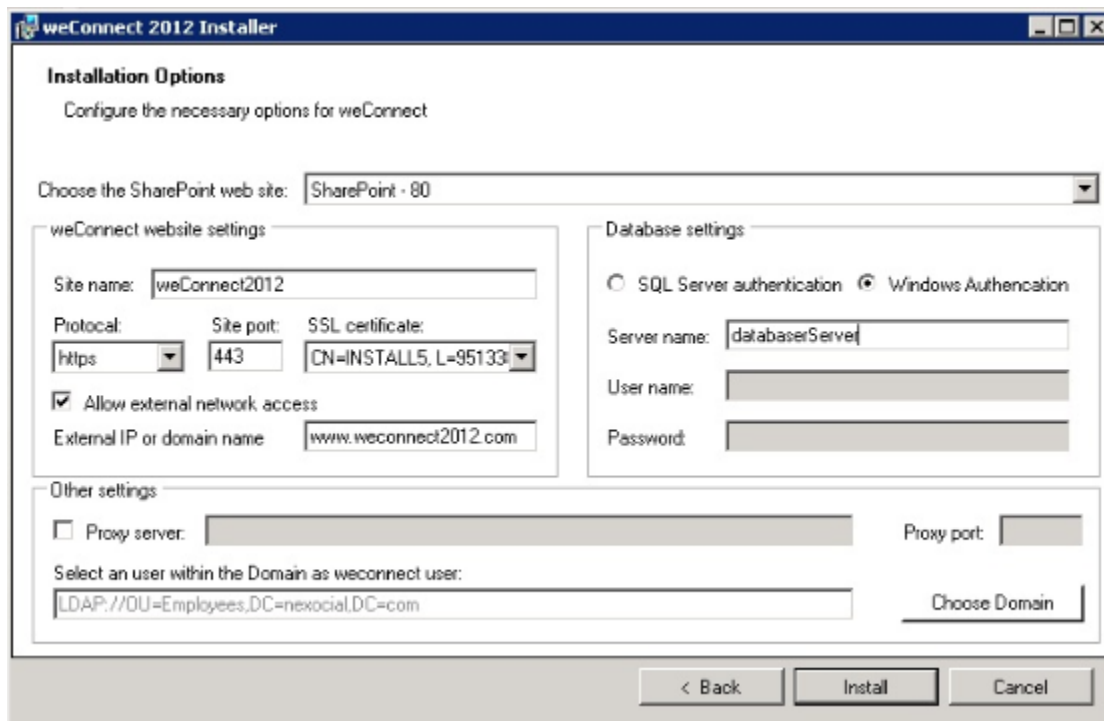
- Selecteer de SharePoint versie en waar u de installatie wilt opslaan bij 'Destination Folder'.
Klik erna "Next".



Let op: Kies de SharePoint versie die op uw computer is geïnstalleerd

- Opties instellen voor het installeren van weConnect

Kies eerst een SharePoint website waar u weConnect wilt installeren. Hier is bijvoorbeeld gekozen voor 'Sharepoint – 80'.



- weConnect website instellingen:



Site name: Geef een naam voor de site op.

Protocol: Kiest u “https”, dan dient u de “site port” en het “SSL certificaat” in te vullen.

Toegang tot het extern netwerk toestaan:

Gebruikers kunnen toegang tot weConnect krijgen door het extern netwerk te gebruiken als er een domeinnaam wordt ingevuld. De “External IP or domain name” dient een IP adres te zijn of een weblink.

- Database-instellingen:



Er zijn twee authenticaties om uit te kiezen:

- SQL Server authenticatie
- Windows authenticatie

- Overige instellingen:



Proxy server:

Als uw computer toegang tot het extern netwerk via een proxy server wil, vink het vakje naast “Proxy server” aan. Vul in de grijze balken de proxy server en de proxy poort in.

Een persoon of groep selecteren die toegang tot weConnect heeft/hebben:

Klik “Choose Domain” en selecteer de persoon of groep in de “Select a user within the Domain as weConnect user” balk. Klik “Install”.

Step 03 : SharePoint instellen

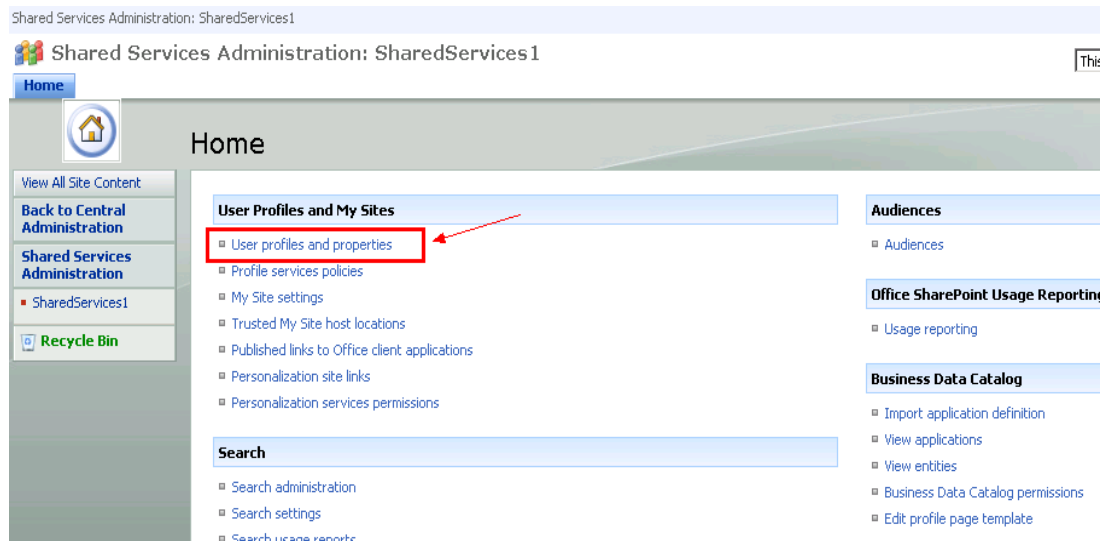
Gebruikersprofiel synchroniseren

- Open SharePoint Central Administration -> SharedServices1 (Dit zou inclusief de eerder gekozen SharePoint poort moeten zijn. Hier is dit 'Sharepoint – 80').

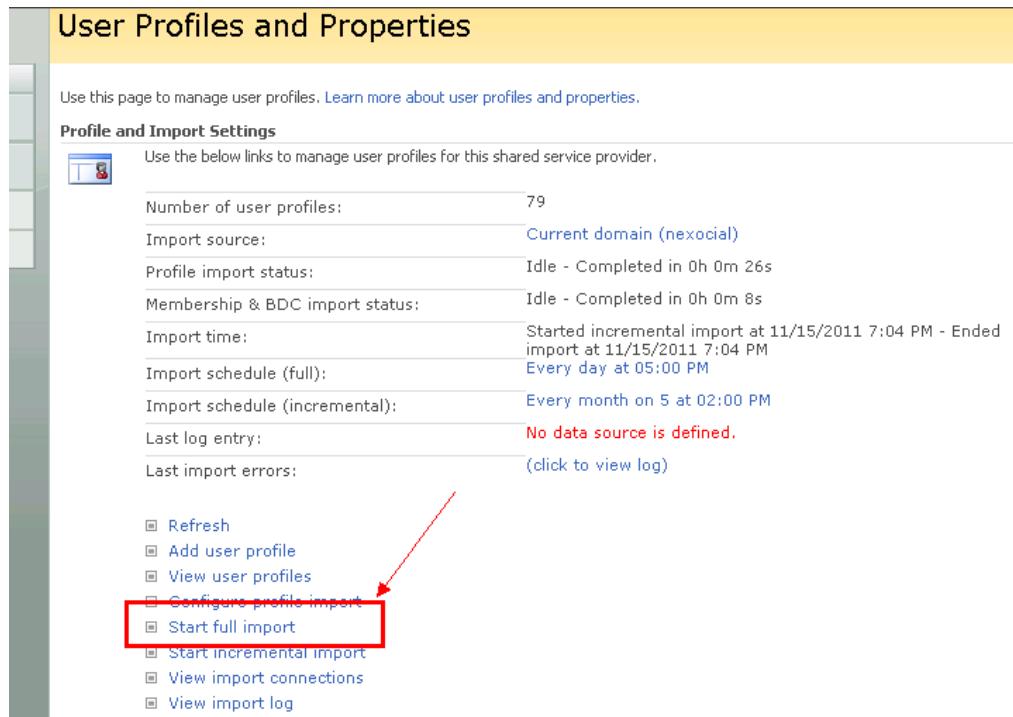
The screenshot shows the SharePoint Central Administration interface. The top navigation bar includes 'Operations' and 'Application Management'. The main heading is 'Manage this Farm's Shared Services'. Below this, there are instructions and a list of actions: 'New SSP', 'Change Default SSP', 'Change Associations', and 'Restore SSP'. A table lists 'SSP and associated Web applications' with one entry: 'SharedServices1 (Default)' with 'SharePoint - 10000' and 'SharePoint - 80 (Administration site host)'. The 'SharePoint - 80' entry is underlined in red. Below the main content, there is a 'Central Administration' section with a navigation bar (Home, Operations, Application Management) and a list of 'Administrator Tasks'.

Type	Order	Title
[Icon]	1	READ FIRST - Click this link for deployment instructions
[Icon]	2	Incoming e-mail settings
[Icon]	3	Outgoing e-mail settings
[Icon]	4	Configure Workflow Settings
[Icon]	4	Configure Session Throttles for InfoPath Forms Services.
[Icon]	4	Add/Change Excel Services Trusted Locations
[Icon]	4	Service level settings for SharedServices1
[Icon]	5	Central Administration application pool account should be unique.
[Icon]	10	Check services enabled in this farm
[Icon]	15	Diagnostic logging settings

➤ Klik "User profiles en properties"



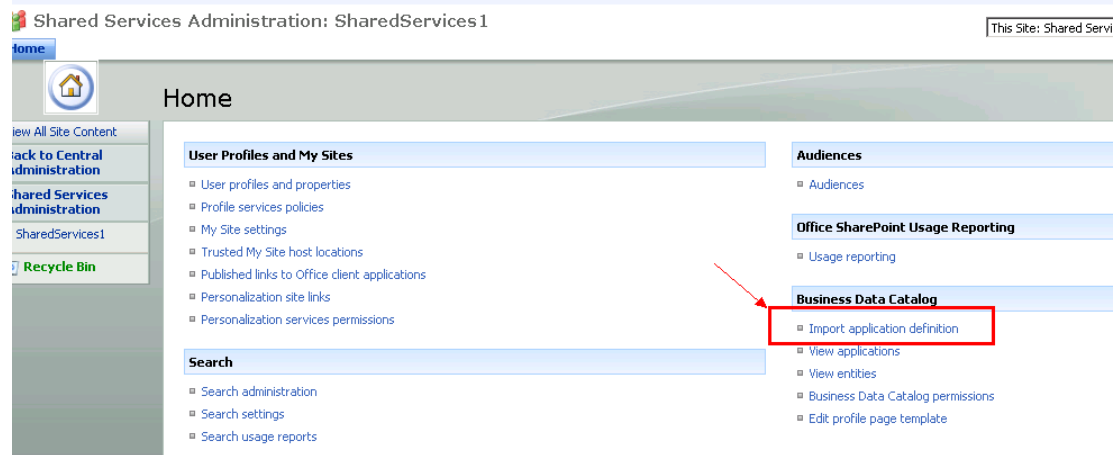
➤ Klik "Start full import"



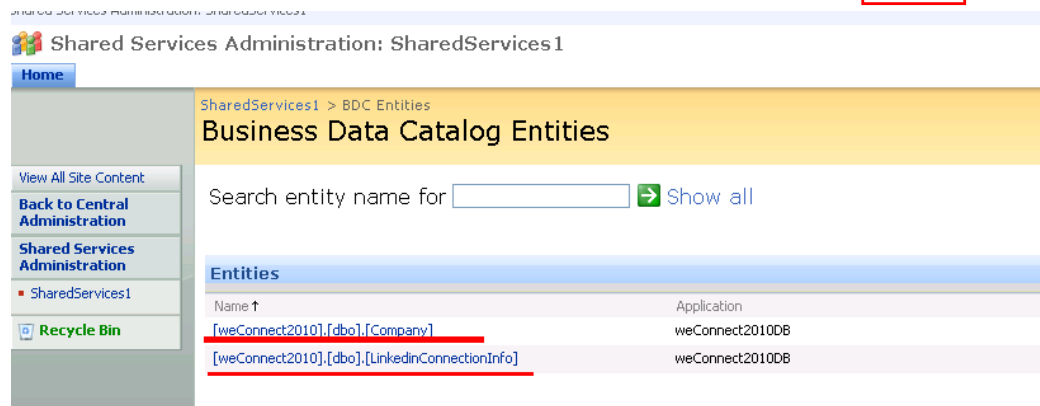
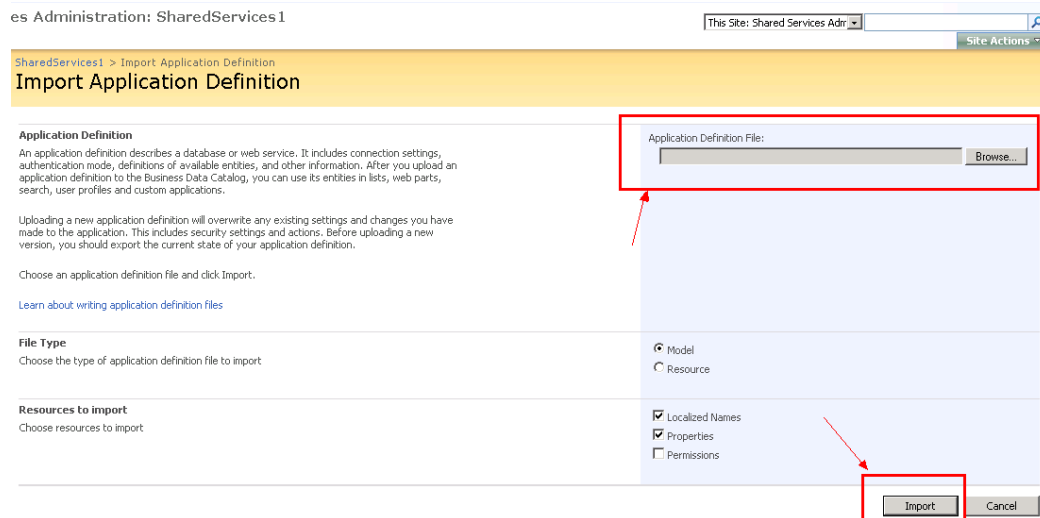
De synchronisatie van het gebruikersprofiel is hiermee voltooid.

Zoekfunctie importeren

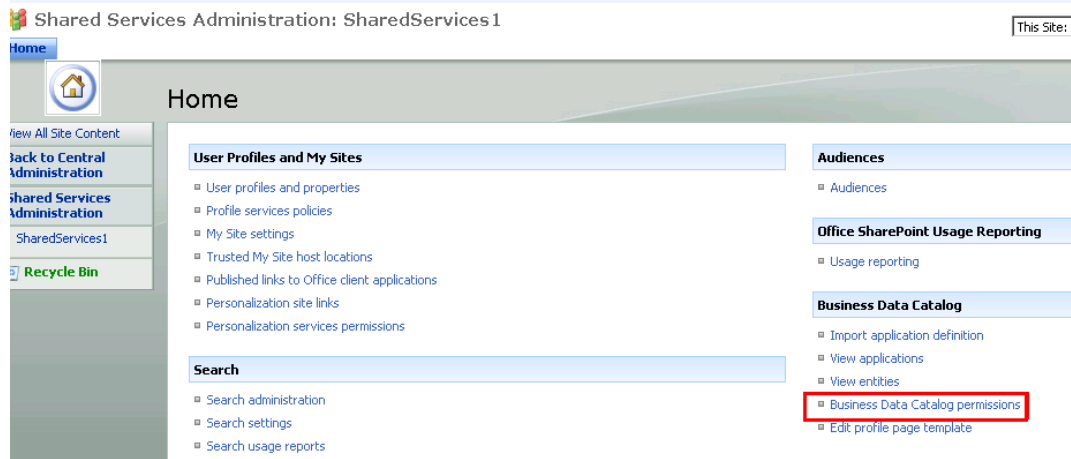
- Ga terug naar de SharedServices1 pagina en klik "Import application definition".



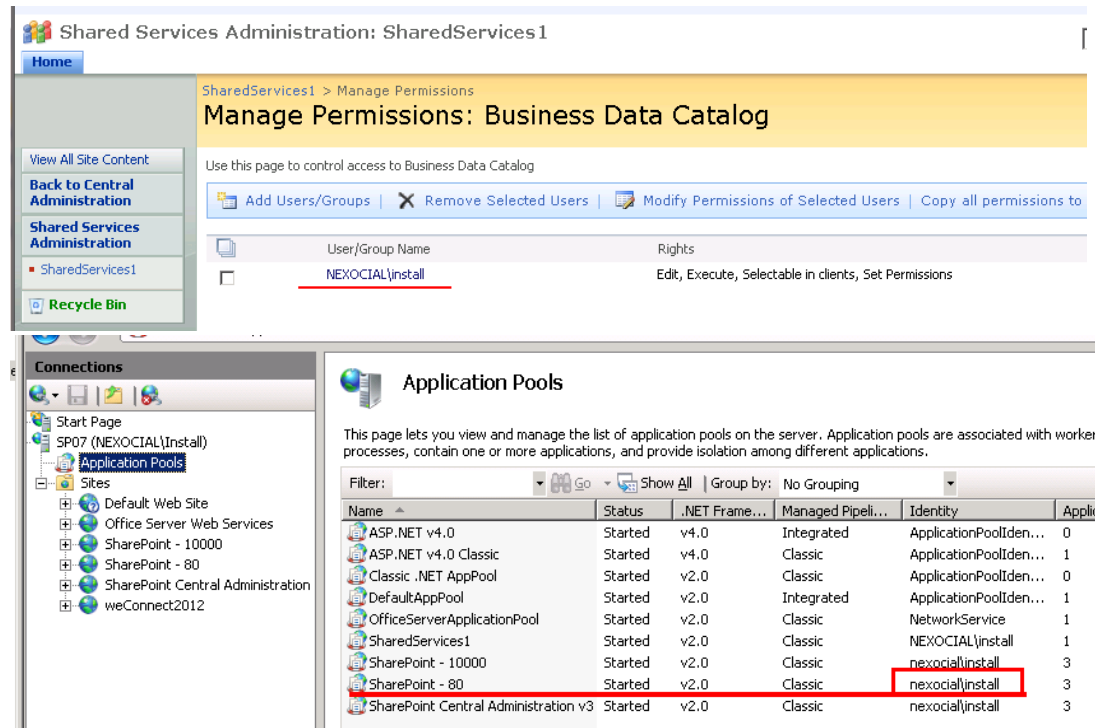
- Selecteer het bestand dat geïmporteerd dient te worden en klik op "import"



➤ Ga terug naar de SharedServices1 pagina en klik “Business Data Catalog permissions”



Wees er zeker van dat er een juiste gebruiker is. De gebruiker dient de SharePoint administrator en de IIS identity-gebruiker te zijn.



Zoekfunctie configureren

- Ga terug naar de SharedServices1 pagina -> Search Administration -> Content sources

Shared Services Administration: SharedServices1 Welcome System

Shared Services Administration: SharedServices1

[Home](#)

Search Administration

Administration

- Search Administration
- Central Administration

Crawling

- **Content sources**
- Crawling rules
- Crawling log
- Default content access account
- File types
- Reset all crawled content
- Crawler impact rules
- Proxy and timeouts

Queries and Results

- Authoritative pages
- Federated Locations

System Status		Sh
Crawl status	Idle	The
Items in index	781	dis
Server status	SP07 : C: 114GB	nes
Propagation status	Propagation not required	
Default content access account	Nexocial\install	I v
Contact e-mail address	suyun.zuo@nexocial.com	
Proxy server	none	
Scopes update status	Idle	
Scopes update schedule	Automatically scheduled	
Scopes needing update	0	
Search alerts status	On Disable	
Query logging	On Disable	

Active crawls				
Content Source	Status	Duration	Success	Error

- Een "New Content Source" creëren

Shared Services Administration: SharedServices1

Shared Services Administration: SharedServices1

[Home](#)

Shared Services Administration: SharedServices1 > Search Administration > Content sources

Manage Content Sources

Use this page to add, edit, or delete content sources, and to manage crawls.

[New Content Source](#) | [Refresh](#)

Type	Name	Status	Current crawl duration	Last crawl duration	Last crawl
	Local Office SharePoint Server sites	Idle		00:00:13	11/15/201

Stel het in als volgt:

Let op: De "Content Source" type moet zijn "Business Data"

* Indicates a required field

Type
Select the type of schedule.

Daily
 Weekly
 Monthly

Settings
Type the schedule settings.

Run every: * 1 days

Starting time: 12:00 AM

Repeat within the day

Every: 5 minutes

For: 1440 minutes

OK Cancel

Name: *
weConnectDB

Select the type of content to be crawled:

SharePoint Sites
 Web Sites
 File Shares
 Exchange Public Folders
 Business Data

Select the Business Data Catalog applications to be crawled:

Crawl entire Business Data Catalog
 Crawl selected applications

weConnect2010DB_Instance

Select the schedule that this should be a part of:

Full Crawl
None
[Create schedule](#)

Incremental Crawl
None
[Create schedule](#)

Start full crawl of this content source

* Indicates a required field

Type
Select the type of schedule.

Daily
 Weekly
 Monthly

Settings
Type the schedule settings.

Run every: * 1 days

Starting time: 12:00 AM

Repeat within the day

Every: 5 minutes

For: 1440 minutes

OK Cancel

Name: *
weConnectDB

Select the type of content to be crawled:

SharePoint Sites
 Web Sites
 File Shares
 Exchange Public Folders
 Business Data

Select the Business Data Catalog applications to be crawled:

Crawl entire Business Data Catalog
 Crawl selected applications

weConnect2010DB_Instance

Select the schedule that this should be a part of:

Full Crawl
At 12:00 AM every day, starting 11/15/2011
[Edit schedule](#)

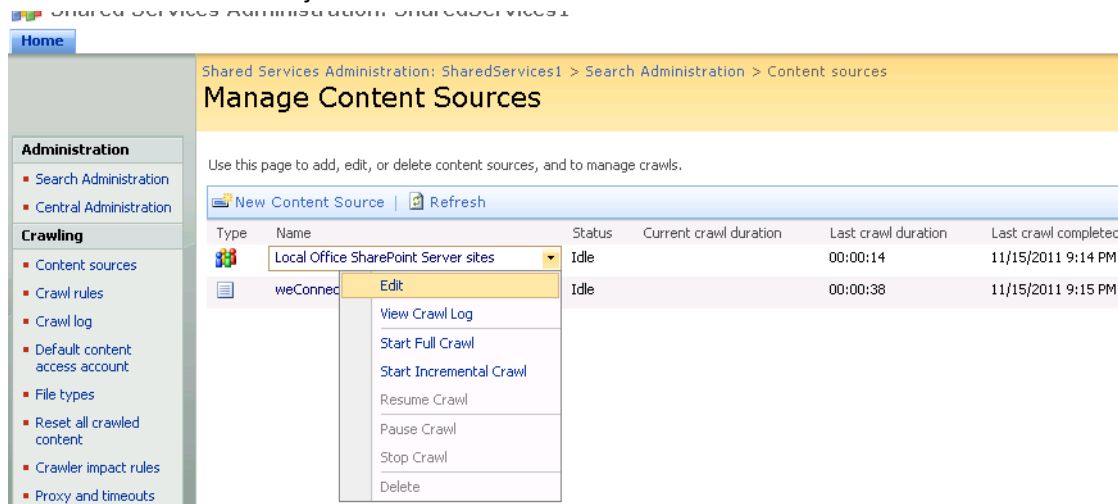
Incremental Crawl
None
[Create schedule](#)

Start full crawl of this content source

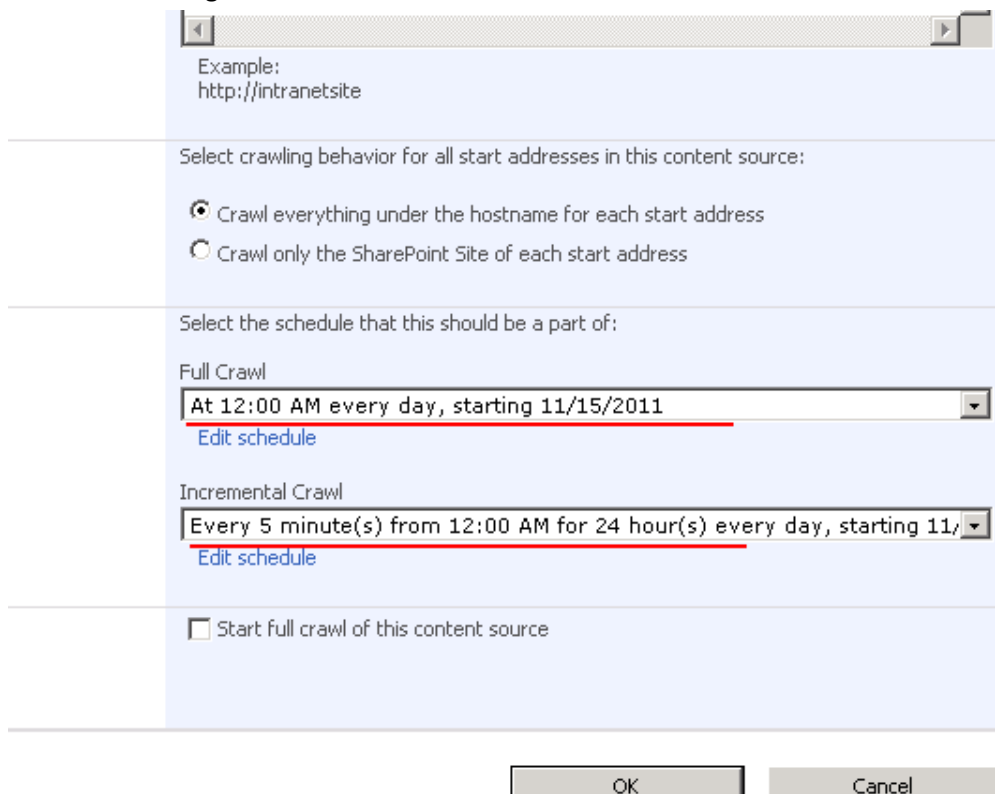
Klik "OK"

➤ “Local Office SharePoint Server sites” bewerken

Kies “Edit” van de keuzelijst naast “Local Office SharePoint Server sites”



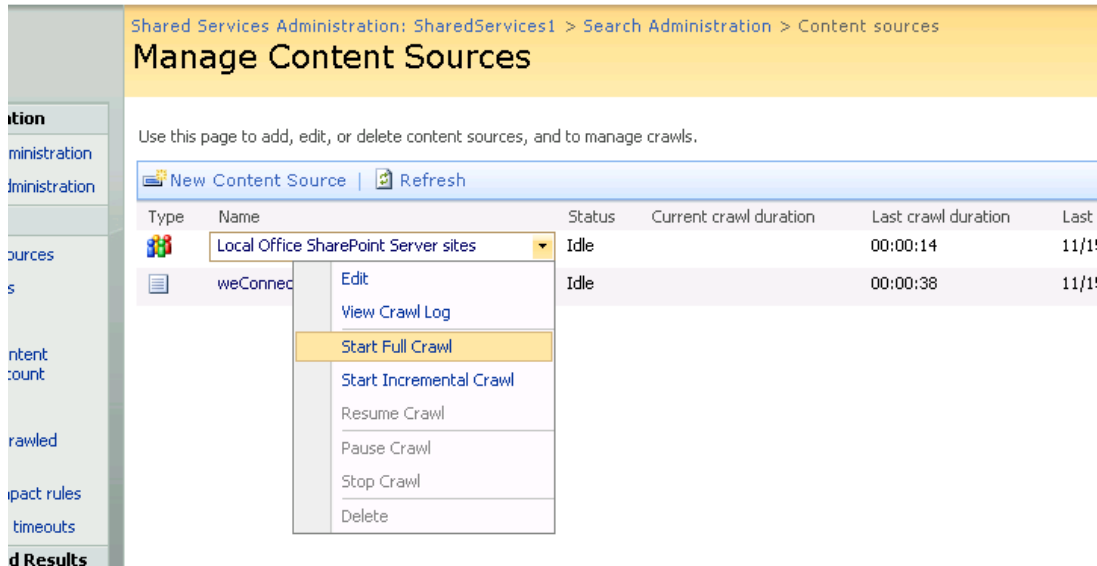
Stel het in als volgt:



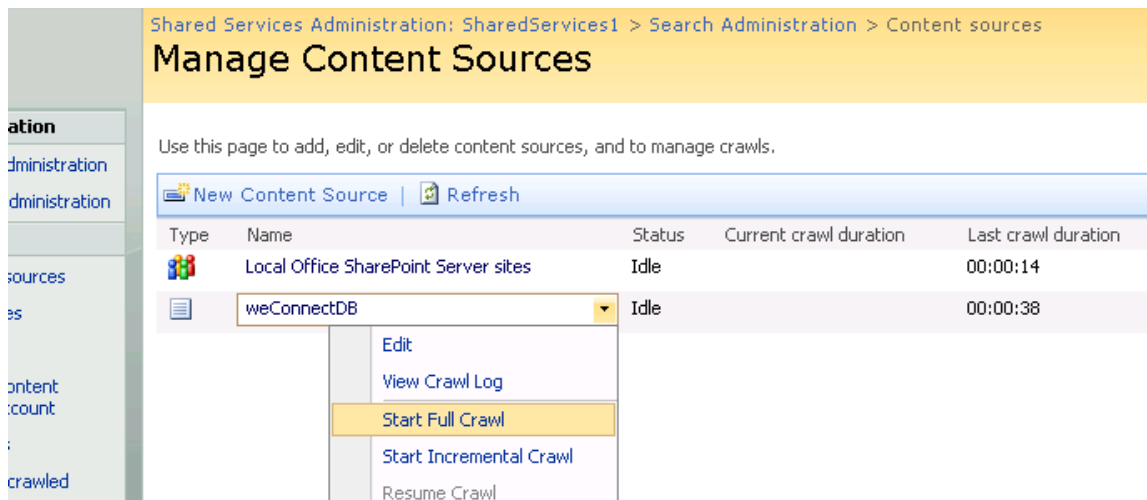
Klik “OK”

Zoeken naar twee inhoudsbronnen

- Kies “Start Full Crawl” van de keuzelijst naast “Local Office SharePoint Server sites”



- Kies “Start Full Crawl” van de keuzelijst naast “weConnect DB”



Hiermee is de installatie van weConnect voltooid.